

Manrope

Version	2.0
Styles	7
Release Date	Dec 4, 2018
Publisher	Michael Sharanda
File Formats	OTF, WOFF, WOFF2, TTF (legacy)
License	SIL Open Font License, Version 1.1. This license is available with a FAQ at: http://scripts.sil.org/OFL

Sometimes, creativity comes from simplicity, elegance, and readability.

This font is an extra mile towards, guided by optical balance, and packed with modern features.

About Manrope Font Family

Manrope is a modern Sans Serif for everyone. The font was designed considering modern visual aesthetics and needs in mind.

Universal use is one of the key targets of this font. It fits paragraphs and titles. Works great on print materials and digital displays. Compact size and modern web-font formats make it great for web-pages as well.

The typeface is a crossover of different font types. It is: semi-condensed, semi-rounded, semi-geometric, semi-din, semi-grotesque. It has semi-closed aperture and minimal stroke thickness variations.

The v2 of the font comes in 7 styles, has much better weight consistency, kerning adjustments, glyph points optimization, much better Cyrillic, tabular figures and adjusted OpenType features.

The project started in June 2017 under the name "Vladivostok Font", later font was completely redesigned and got a new name. During this time I've received lots of feedback and support from a professional type and graphic designers. Have learned a lot and made a great progress.

Many thanks to all who helped along the way. Without you, it wouldn't be as good as it's now. You are a part of it.

Weights

Manrope font was designed with modern needs in mind and comes with six carefully optimized weights: from thin to bold.

No italics versions provided. When I designed this font, I believed that inclined text does not fit into the context of modern time.

200

Manrope Thin

300

Manrope Light

400

Manrope Regular

500

Manrope Medium

600

Manrope Semibold

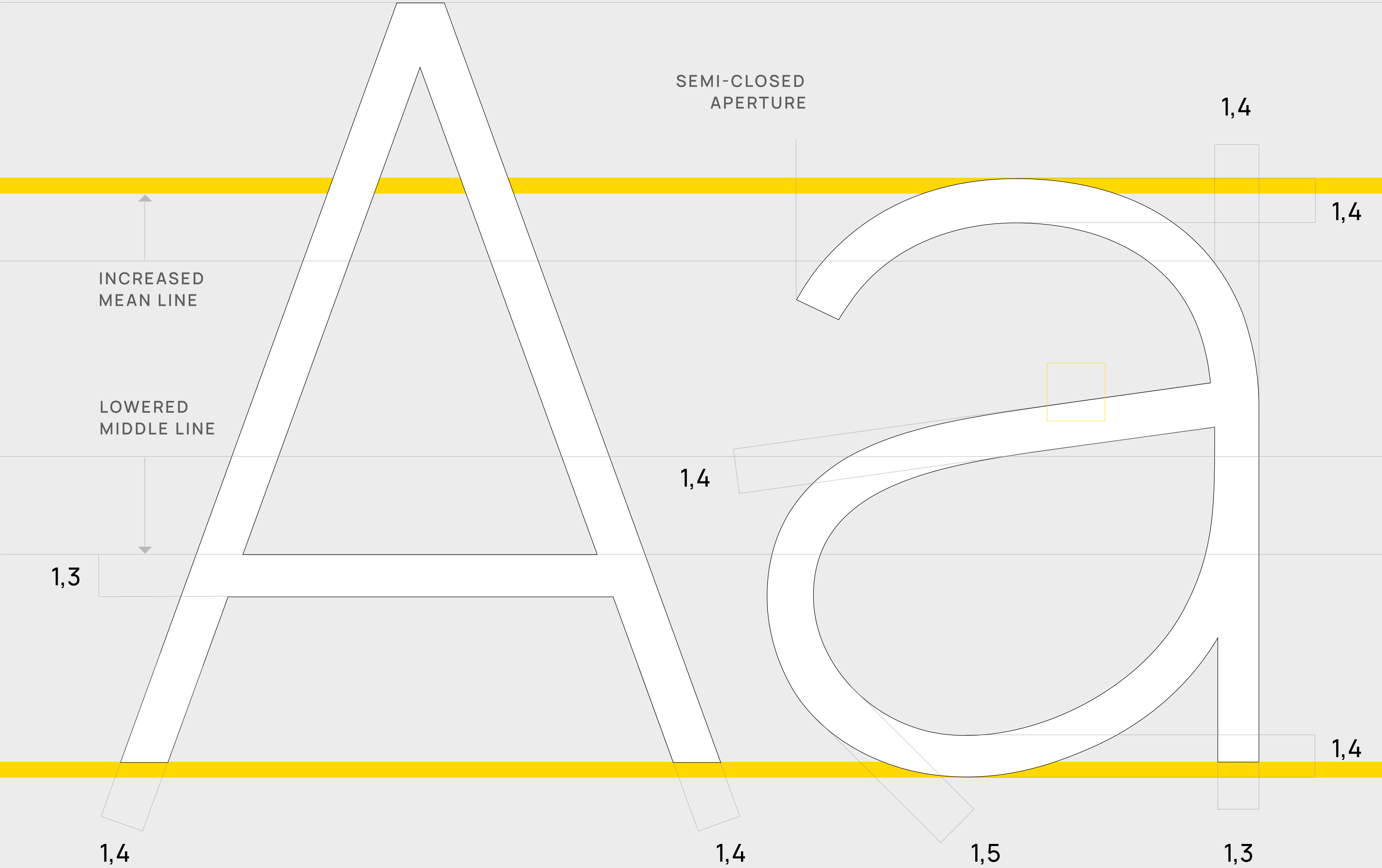
700

Manrope Bold

800

Manrope Extrabold

Geometry



Extended Latin & Cyrillic

Manrope font has wide language support, covering most Latin and Cyrillic languages.

Thanks to all native speakers who helped along the way.

Małżonkę

Ó, náhlý déšť

Zwölf große

ÅSIDOSÄTTA

Экземпляр

Гудзик

iPhone X

Мы всегда мечтали сделать iPhone одним большим дисплеем. Настолько впечатляющим дисплеем, чтобы вы забывали о самом физическом устройстве. И настолько умным устройством, чтобы оно реагировало на прикосновение, слово и даже взгляд.

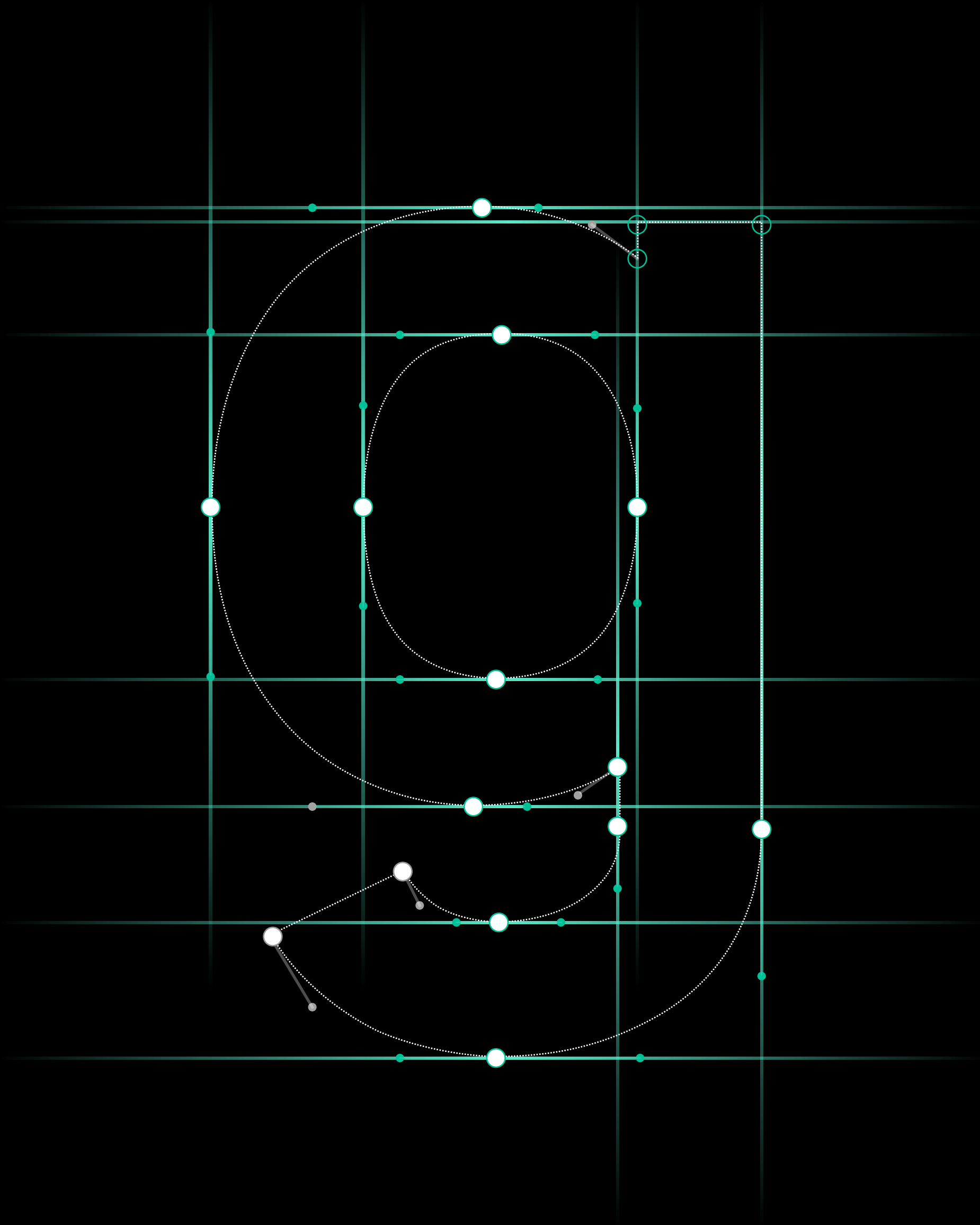
[Смотрите презентацию ▶](#) [Смотрите фильмы ▶](#)

What if Apple Russia used Manrope font?

**FORM FØLGER FUNKTION –
STØRRELSEN PÅ
HØJTTALERENHEDERNE
BESTEMMER DEN FEMKANTEDE
FORM, OG DEN ØNSKEDE
OPLEVELSE DIKTERER VALGET AF
MATERIALER.**

What if Bang & Olufsen Netherlands used Manrope font?

Pixel Optimised



9px	Never enough
12px	Never enough
15px	Never enough
18px	Never enough

Case Sensitive

Manrope font has not only alternative glyphs for uppercase styles, but it's also context-sensitive. It changes glyphs for you automatically, while you typing.

iPod (NANO), iPod (nano)

Block [E], Block [e]

MY@NAME, my@name

RE-USE, re-use

+1 (415) 620-7893 (mobile)

Central → Kowloon, A → B

Required: ID:

Geometric Digits

Digits in Manrope font were designed with a thought of digits having a different purpose from letters.

Digits in Manrope font are perfect for interface design and numeric data, such as phone numbers, card numbers, watch faces, etc.



Proportional &
Tabular Figures

2819 75	2819.75
375.11	375.11
6131.04	6131.04

Auto-Apostrophe

Some software automatically replaces (') with (') in your writings, according to the context. But not all. For example, no internet browser is doing that.

However, Manrope font uses the OpenType feature, which sets correct apostrophe for you automatically.

it's → it's

you're → you're

don't → don't

who's → who's

etc.

Icon-Ligatures

Manrope font contains few helpful custom ligatures that might help you display easier some special symbols and basic icons.



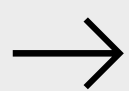
(>)



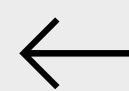
< 3



(c)



- >



< -



--

LATIN

abcdefghijklmnopqrstuvwxyz

DIGITS

0 1 2 3 4 5 6 7 8 9

CYRILLIC

АБВГЃГДЕЁЁЖЗИЙЙКЌЛМНОПРСТУЎФХЧЦШЩЪЬЫЛЬЊS
ЄЭІЇЈђЮЯѣҮһӨабвгѓгдеёежзиййкќлмнопрстуўфхчцшщ
ъьыльњsєэіїјћюяђүһө

LOCAL BULGARIAN

Д Л В г д ж з и ѱ к л н т ц щ ю

LATIN EXTENDED

ĀĂÂÄÅĄǺǼĈĊČĎĐÉĚÊËÈĒĘĞĢĤİÎÏĲĴĶĹĻŁŁŃŅŦŨ
 ÓÔÖÒÕØǾƆƦŔŖŚŜȘŞƦŢŦÚÛÜÙÚÛÜŰŴŶŸŹŻ
 áăâäåąǻǽċċčċďđéěêëèēęğģĥıîïĳķĺłłłŋň
 őōøõœþrířŗśśșșßţţţţúûüùúūųŵŵŵŵýÿÿÿźżż

LIGATURES

ff fl ffi tt

ICON LIGATURES

⏮ — © → ← ♡

CURRENCIES

¢ \$ € ₣ ₤ ₧ £ ¥

PUNCTUATION & SYMBOLS

α β μ & @ # N ° © ® ™ * ! ¡ ? ¿ + - × = ≠ ± ~ % ↑ → ↓ ← ↵ ° ^ | \ / _ - - - · • : , ;
„ “ ” ’ ‘ ’ { } [] () « » < >

Thank you for exploring.

Download	http://bit.ly/manrope
Contact	michael@sharanda.com
Github	https://github.com/sharanda/manrope

About author Michael Sharanda is an award-winning digital artist / creative developer, father, minimalist, evangelist of Blender 3D.

Currently, a design director at Huawei, based in Shenzhen, China.
Previously: lead-designer at OnePlus, OPPO, Alcatel, had an honor to contribute on projects for Samsung, Android, YouTube.

